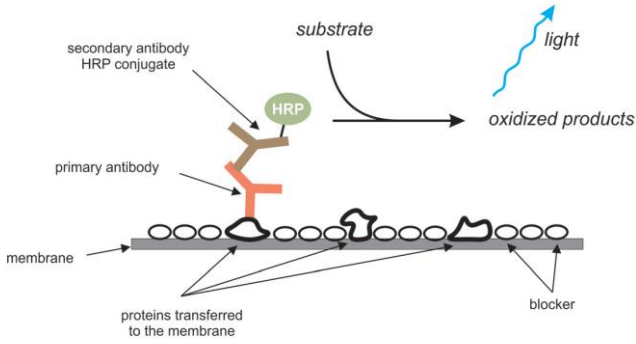


# Glossy ECL HRP Substrate

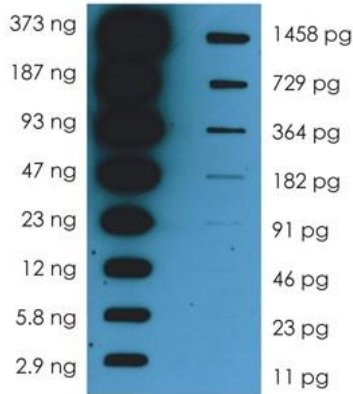
## Western Blotting:

Western blotting is a protein analysis tool for a molecular biology and protein chemistry laboratory. The principle of chemiluminescent Western blotting is shown in Figure.



## Overview of Glossy ECL HRP Substrate:

Glossy ECL HRP Substrate is more sensitive than other chemiluminescent substrates and allows up to 10 times less antibody than other substrates.



Glossy ELC HRP Substrate is designed for strong and long-lasting signal after reaction with HRP. It produces higher sensitivity when detecting low proteins with shorter exposure times.

- The sensitive HRP substrate
- Strong chemiluminescent signal
- Detect low pg protein amounts
- Long lasting signal

## Short Protocol:

1. Prepare your protein blot
2. Block membrane for 1 hour at room temperature (RT)
3. Incubate blot with primary antibody for one hour at RT with gentle agitation
4. Wash blot:
  - 1 x quickly
  - 1 x 15 min, with 0.7 ml/cm<sup>2</sup> membrane
  - 3 x 5 min, with at least 0.3 ml/cm<sup>2</sup> membrane each time
5. Incubate blot with secondary antibody for one hour at RT with gentle agitation
6. Wash blot:
  - 3 x 5 min, with at least 0.3 ml/cm<sup>2</sup> membrane each time
7. Mix Glossy ECL HRP components 1:1 to obtain 0.1 ml/cm<sup>2</sup> and place on blot for 2 minutes
8. Drain excess reagent
9. Cover damp blot with plastic wrap and image with CCD camera or by exposure to X-ray film

## Kit Contents:

**Catalog Number:** NB0512045C1 – 200 mL

Item	Quantity
Glossy ECL Luminol/enhancer solution	100 mL
Glossy ECL Peroxide Chemiluminescent Detection Reagent	100 mL

**Catalog Number:** NB0512045M1 – 500 mL

Item	Quantity
Glossy ECL Luminol/enhancer solution	250 mL
Glossy ECL Peroxide Chemiluminescent Detection Reagent	250 mL